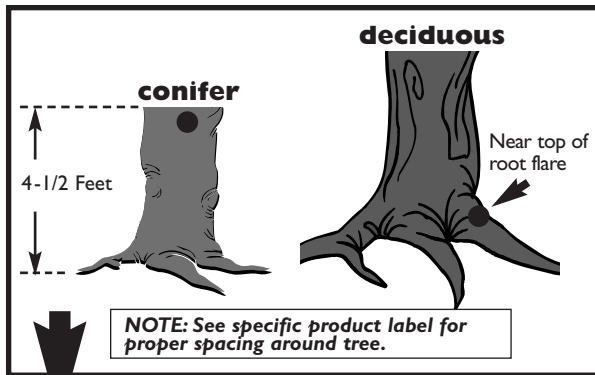
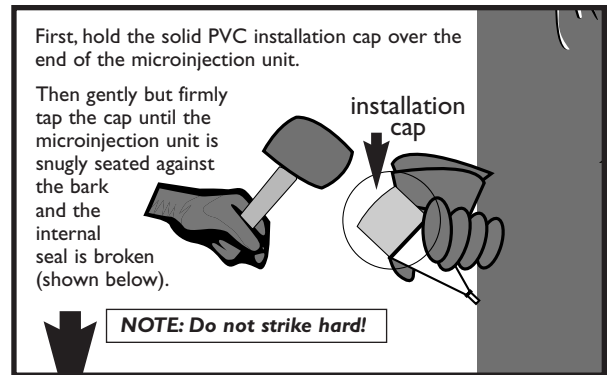




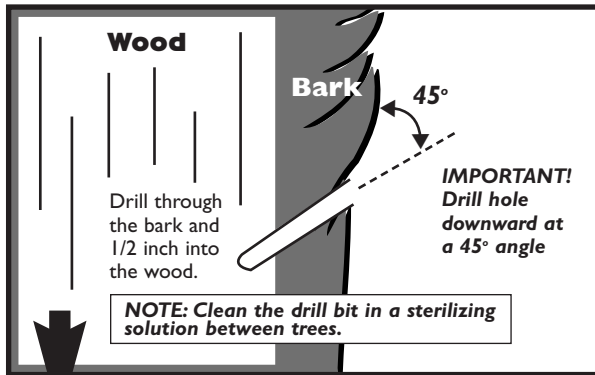
**1. Drill hole at proper location.**



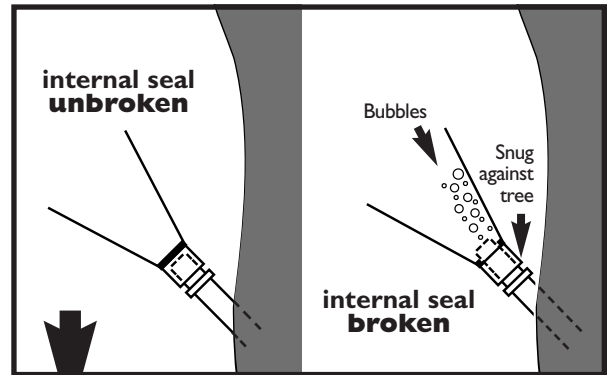
**5. Seat microinjection unit.**



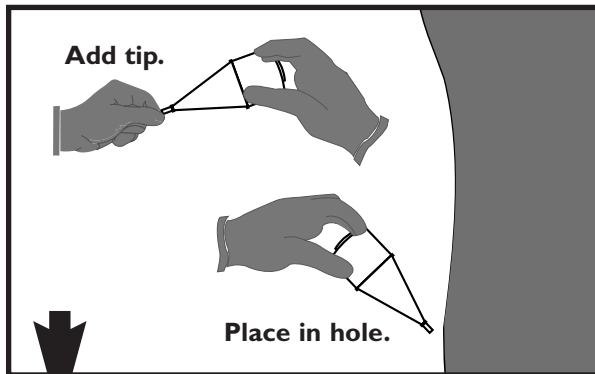
**2. Drill hole to proper depth.**



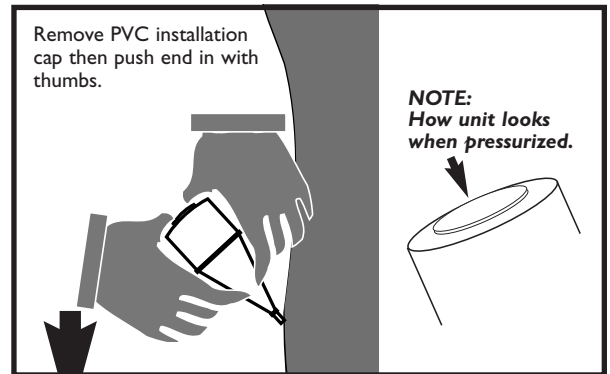
**6. Before seating**      **After seating**



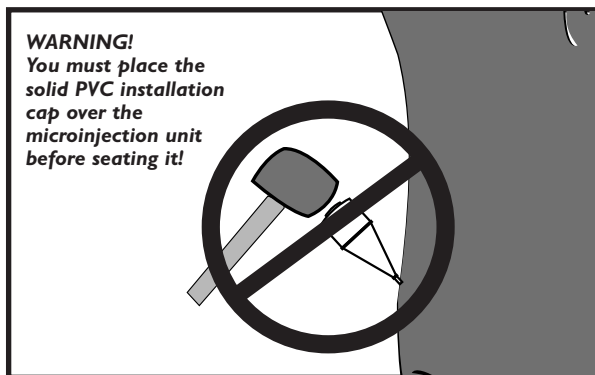
**3. Insert microinjection unit.**



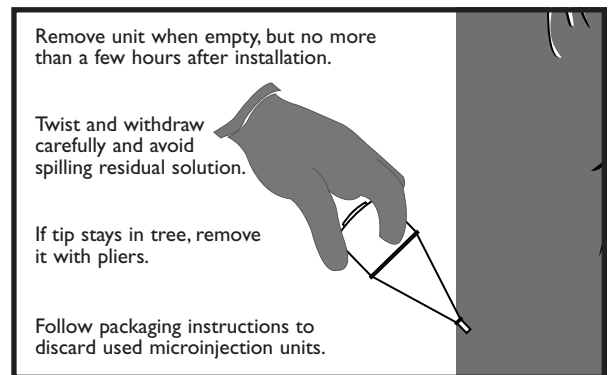
**7. Pressurize microinjection unit.**



**4. Do not strike microinjection unit directly!**



**8. Remove empty microinjection unit.**





# **Tree Tech<sup>®</sup>**

*microinjection systems*

Buyer and/or user are notified that this product is sold only for professional commercial use by personnel properly trained and supervised by the buyer and that this product is not for personal or home use. A material Safety Data Sheet is available for this product and is to be followed prior to use.

# **Tree Tech<sup>®</sup>**

*microinjection systems*

**Please see other side for installation instructions.**

950 SE 215th Ave.  
Morriston, FL 32668  
**1-800-622-2831**

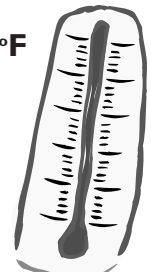
e-mail: [info@treotech.net](mailto:info@treotech.net)  
[www.treotech.net](http://www.treotech.net)

## **Storage**

Keep microinjection units dry and cool.  
(above freezing but under 100°F)

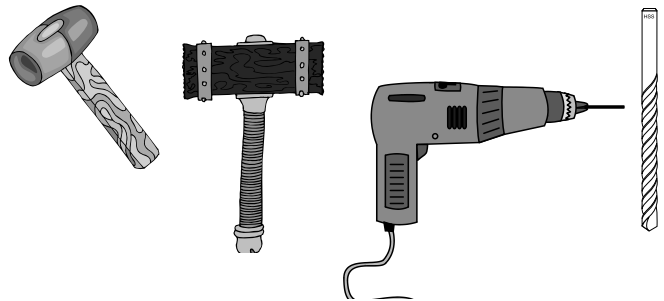
not over 100°F

not under 32°F



## **Tools**

Cordless power drill, sharp 1/164-inch bit, and plastic-faced hammer or rubber mallet



## **Clothing**

When handling, installing, or removing microinjection units, wear safety glasses protective clothing, and chemical-resistant gloves.

